



*Restoring for the Future*

*Sanctuary Stained Glass Window*

*Narthex Stained Glass Windows and Doors*



Dear Members and Friends of Church of the Palms...

As you may know, the stained glass windows in the Sanctuary and Narthex have been in need of restoration for quite some time. Back in 2018, it was decided to do this work when a new settled pastor was called to serve the church. Then the pandemic hit and changed everything. Sadly, the restoration work is no longer work that can be delayed. We must act now to save the windows and to protect our Sanctuary.

Even though the pandemic presented us with a number of challenges, our beloved church has weathered the storm and has come through the other side strong, determined, and hopeful. Our "Ministry of Space" has opened our campus to other churches and community groups - allowing us to share our beautiful facility while at the same time generating generous contributions. New people are gathering with us for worship - some will be joining this Fall. There is reason to be very hopeful as we strive to increasingly become a progressive and community-minded church that treasures its classical worship. This capital campaign is an investment in that hopeful and hope-filled future.

In the coming pages, you will discover information about and see...

- (1) Various questions and answers
- (2) History of the stained glass windows in the Sanctuary and Narthex
- (3) Current condition of our stained glass windows
- (4) Proposed scope of work
- (5) Project timeline
- (6) Cost of proposed work
- (7) Short-term and long-term funding options
- (8) Pictures of the stained glass windows

If you have further questions after reading the campaign material, you are encouraged to reach out in a way that is convenient for you. The important thing is that the congregation understands fully the need for this necessary and crucial work.

Thank you for your faithful and generous commitment to Church of the Palms. *Restoring for the Future* will be a success because of the passion you have for our church!

Bud Scott  
Vice Moderator  
[hscottnh@gmail.com](mailto:hscottnh@gmail.com)  
603.660.3839

The Rev. Todd A. Petty  
Pastor  
[petty.todd@gmail.com](mailto:petty.todd@gmail.com)  
616.322.2316

# *Questions and Answers*

## **Why wasn't the congregation consulted further before this project was commenced?**

Several meetings were held in 2018 and 2019 by the Administrative Team and Leadership Council to address issues related to the stained glass windows. On June 30, 2019, a Congregational Conversation was held. The consensus at the time was that the congregation needed to act. On Sunday, April 24, 2022, the congregation gave the Leadership Council the authority to borrow up to \$300,000 for a stained glass window project. At that time, it was the Leadership Council's plan to hold another congregational meeting in order to discuss the project further. However, the Leadership Council was notified by both vendors that the already expired estimates had to be signed in order to avoid a 20% increase in cost due to supply chain issues and the overall effect of rising inflation. Therefore, the Leadership Council acted to save the congregation approximately \$60,000.

## **Were other options considered in addition to the scope of work being proposed?**

The Leadership Council explored the possibility of removing the stained glass and *not* proceeding with the restoration side of the scope of work - that is, installing a new framing system and clear hurricane rated glass *only*. The Leadership Council inquired about the value of the stained glass and if it could be sold. The Leadership Council learned that the stained glass - mouth-blown sheet glass manufactured by Lamberts Glass in Germany - is the most expensive stained glass produced in the world today. Although it is quite valuable, the stained glass in the Sanctuary is also quite specific in terms of design. Finding a buyer would be almost impossible as most churches do what Church of the Palms did back in the early 1960's: design a stained glass window for a specific place and purpose. Therefore, it was decided to preserve one of the most beautiful elements of our sacred space by restoring and reinstalling the stained glass windows.

## **Were other vendors besides McMow Art Glass and DeMattia & Son Construction considered?**

Yes, inquiries were made with two companies. McMow (located in Lake Worth) is the only one who responded with an engineering report and plan - the only company with the capacity to do the work. DeMattia & Son Construction was chosen because they work hand in glove with McMow on many projects.

## *Window History*

The stained glass for the stained glass windows in the Sanctuary and Narthex was manufactured by Lamberts Glass in Germany. The process used is called "Mouth-Blown Sheet Glass," which is the most expensive kind of stained glass manufactured in the world today. The stained glass windows were installed by Nobis Studios from Canton, Ohio.

At the time of its installation (before the dedication of the campus in 1965), the Sanctuary stained glass window was the very first stained glass window of its kind in the United States to depict the symbol of the then, newly formed United Church of Christ (which was birthed by the merger in 1957 of the Congregational Christian Churches and the Evangelical and Reformed Church). The UCC symbol, based on the ancient "Cross of Victory" or "Cross Triumphant," features the CROWN which reminds us of the sovereignty of Jesus the Christ; the CROSS which reminds us of the love of Jesus the Christ for the world; and the ORB - divided into three parts - reminds us of Acts 1:8 that the church is to follow Jesus' command to be his "witnesses in Jerusalem and in all Judea and Samaria and to the ends of the earth." The stained glass windows in the Narthex feature the HAND as a symbol for God; the FISH as a symbol for Jesus the Christ; and the DESCENDING DOVE as a symbol for the descent of the Holy Spirit.

## *Current Condition*

The current condition of the Sanctuary stained glass necessitates *immediate* action. **First**, the plastic protection on the outside of the building is not hurricane rated. **Second**, the frame that secures the window to the building is separating from the Sanctuary structure which is jeopardizing its overall stability. **Third**, some of the individual window panels have weakened over time resulting in various pieces of stained glass falling out of their intended places. **Fourth**, some of the stained glass has been broken and will need to be replaced in order for the window to be restored fully. The stained glass and doors in the Narthex need attention, too. **First and foremost**, the protective glass and entry doors are not hurricane rated. **Second**, some of the stained glass is separating from the window panels causing cracks and breakage.



# *Scope of Work*

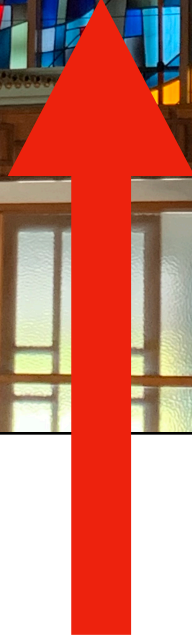
- 1.** Remove all stained glass from the Sanctuary. Removal will be done from inside the building (McMow Art Glass).
- 2.** Remove exterior plastic covering in front of the Sanctuary stained glass window. The clips holding the plastic covering to the building are separating from the building and causing damage to the stone and masonry work. The plastic covering is not hurricane rated (DeMattia & Son Construction).
- 3.** Remove plate glass underneath the plastic covering. This is not tempered glass and will be somewhat dangerous (DeMattia & Son Construction).
- 4.** Remove old window frame (not hurricane rated) and install a new window frame (hurricane rated). Install hurricane rated glass on the outside to protect the Sanctuary stained glass window and the Sanctuary itself (DeMattia & Son Construction).
- 5.** Remove stained glass in Narthex (McMow Art Glass).
- 6.** Remove plate glass windows and tempered glass doors in the Narthex. Remove old window frames in Narthex (not hurricane rated) (DeMattia & Son Construction).
- 7.** Install new window frames (hurricane rated) in Narthex. Install hurricane rated glass to protect Narthex stained glass windows. Install new hurricane rated frames and glass doors in Narthex (DeMattia & Son Construction).
- 8.** Clean all stained glass. Repair or replace any broken stained glass. Fabricate new stained glass panels. Repair coming (how glass pieces are held together) as needed. Place stained glass into new stained glass panels and attach new stained glass panels to new hurricane rated window frames (McMow Art Glass).

PLEASE NOTE: The blowing of new stained glass by Lamberts Glass in Germany may be delayed because of natural gas prices/shortages due to the war in Ukraine.

Example of a window Panel...



Some of the broken stained glass is from the green border where the window frame is separating from the building - where the stained glass panels are separating from the window frame.



The weight of some of the stained glass panels are compressing other panels and causing some of the coming to buckle. New stained glass panels will be fabricated. Caming issues will be addressed.

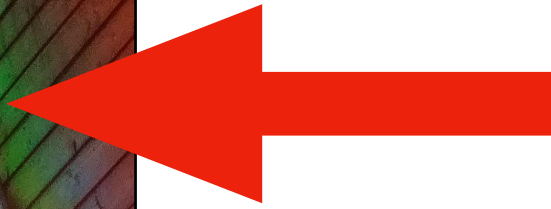
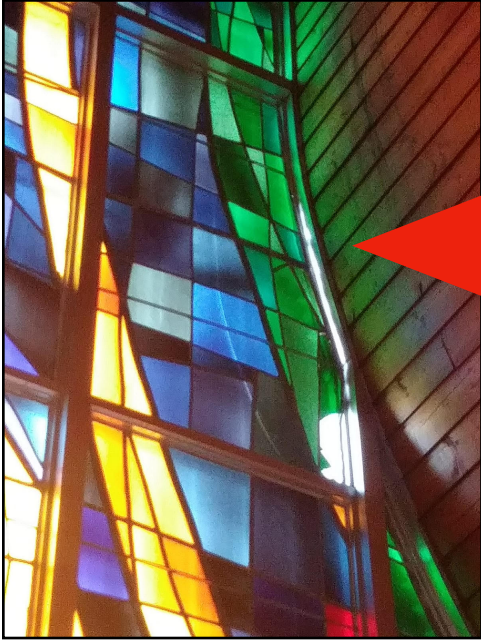




Plastic exterior panels and plate glass underneath are not hurricane rated. Window frame is separating from the building. The stained glass panels attach to this frame.

Narthex doors and exterior plate glass covering stained glass windows are not hurricane rated.

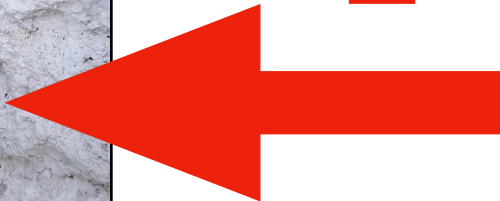
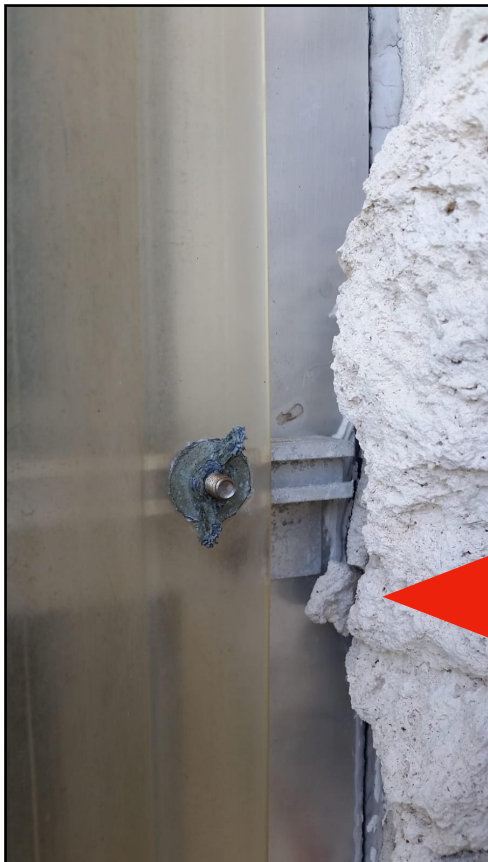
Both the plastic covering and plate glass over the Sanctuary stained glass window and the plate glass and doors in the Narthex leave the Sanctuary and Narthex stained glass vulnerable to hurricanes. Even worse, the current non-hurricane rated plastic covering, plate glass, window frames and glass doors and frames leave the *entire* Sanctuary and Narthex vulnerable during hurricanes.



Window frame separating from the building; stained glass panels separating from the window frame; stained glass breaking.



Stained glass is separating from the lead caming, causing glass to sag and loosen. This effects the overall structural integrity of the stained glass windows.



Window frame separating from the Sanctuary wall causing damage to stone and masonry.



# *Project Timeline*

## **2018 and 2019**

The Administrative Team and Leadership Council met several times to discuss the scope of work and to secure vendors to do the work.

## **April 2022**

Congregational Meeting held to authorize the Leadership Council to establish a line of credit up to \$300,000 for the purpose of restoring the stained glass windows.

## **May 2022**

Contracts were signed with McMow Art Glass and DeMattia & Son Construction and necessary deposits were made.

## **May 2022**

DeMattia & Son Construction ordered all of the necessary materials for the construction of a new hurricane rated framing system for hurricane rated glass and the stained glass window panels.

DeMattia & Son Construction ordered all of the necessary materials for new hurricane rated doors and frames in the Narthex.

## **September 2022**

DeMattia & Son Construction received ordered materials. Currently, they are taking an inventory to make certain that all materials were received and that all materials received are in good condition.

## **November 2022 to January 2023 (Possibly Longer)**

McMow Art Glass will remove all stained glass panels, repair or replace broken stained glass, clean all stained glass, build new stained glass panels, place stained glass into new stained glass panels, and re-attach new stained glass panels to the new hurricane rated window frames.

DeMattia & Son Construction will remove non-hurricane rated plastic covering, plate glass, window frames, and doors/door frames. New hurricane rated window frames, glass, glass doors/frames will be installed in the Sanctuary and Narthex.

# *Cost*

McMow Art Glass All work pertaining to the stained glass window Sanctuary	\$85,000.00
DeMattia & Son Construction All non-stained glass window work Sanctuary	\$100,000.00
McMow Art Glass All work pertaining to stained glass Narthex	\$23,000.00
DeMattia & Son Construction All non-stained glass window work Narthex	\$27,000.00
Contingency Masonry and stucco repair, painting, etc. Sanctuary and Narthex	\$40,000.00

---

<b>TOTAL</b>	<b>\$275,000.00</b>
--------------	---------------------

---



# *Funding Options*

## **What is the short-term funding plan?**

Required deposits to order materials and to commence work have been paid out of reserve funds held by the church.

Required installments during the scope of work will be paid from the line of credit as well. It is expected that almost all of the line of credit will be used to fund this project.

## **What is the interest rate on the line of credit?**

The interest rate on the line of credit is variable.

## **How will the line of credit be paid back in the short-term?**

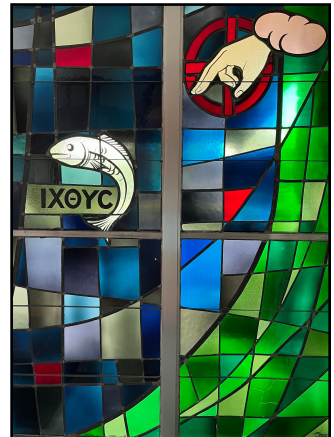
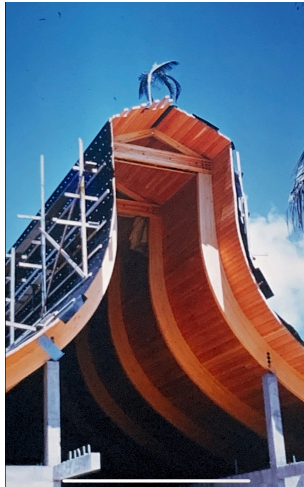
In the short-term, any interest owed on the line of credit will be paid for out of the Operating Budget.

## **How will the line of credit be paid back in the long-term?**

It is the hope of the Leadership Council that the entire cost of the *Restoring for the Future* campaign will be funded by generous gifts from members and friends of Church of the Palms.

## **How will the line of credit be paid back in the event that the capital campaign does not raise the entire amount owed?**

If the capital campaign does not raise enough money to pay the line of credit back in full, the balance will be paid for over time by including principal and interest payments in future Operating Budgets or will be paid for by using a lump sum from the church's investment accounts. Either way, future Operating Budgets will be impacted negatively if we cannot raise enough money in the capital campaign to pay off the line of credit. If we include payments in future Operating Budgets, current dollars used for mission and ministry may have to be reallocated in the event that Operating Budget pledges do not increase to cover such payments. Or, funds from the investment accounts will be used to pay off the debt, thereby reducing the interest income available to the church for its Operating Budget.



## Church of the Palms

1960 North Swinton Avenue | Delray Beach, Florida 33444

561.276.6347 | [ChurchofthePalms.net](http://ChurchofthePalms.net)

The Rev. Todd A. Petty, Pastor